

Tomadas 110Connect



Descrição	Pinagem	Beje	Preto
Enhanced Cat 5, 4-par, não blindado	Universal	406372-1	406372-2
Enhanced Cat 5, 4-par, blindado *	Universal	1116515-1	-
Toolless, não blindado	Universal	1339189-1	1339189-2
Toolless, blindado*	Universal	1339015-1	-

* Não disponível em cores.

Patch Panels



Descrição	Pinagem	Altura (Polegadas)	Part Number
Enhanced Cat 5 12 ports (mini patch)	Universal	(Incluindo Suporte)	406390-1
Enhanced Cat 5 12 ports	Universal	1.75	406981-1
Enhanced Cat 5 24 ports	Universal	1.75	406330-1
Enhanced Cat 5 48 ports	Universal	3.50	406331-1
Enhanced Cat 5 96 ports	Universal	7.00	406332-1

1

Patch Cables



Cor	Part Number
Preto	406483-X
Azul	219242-X
Vermelho	219244-X
Amarelo	219246-X

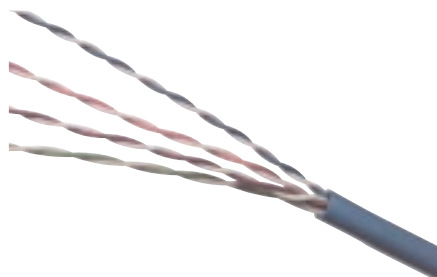
X = Comprimento em pés

-5 = 5 (aprox. 1,5mt)

-8 = 8 (aprox. 2,5mt)

1-0 = 10 (aprox. 3,0mt)

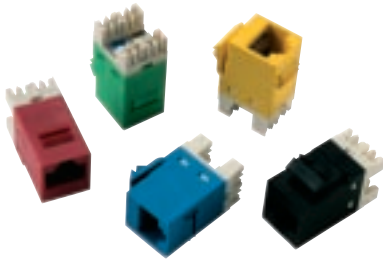
Cabos Categoria 5 Enhanced, 24AWG, 100 Ohm



Descrição	UL/NEC	Dimensão		Vp (nom%)	Peso	Part Number
		Isolante	Externo			
4-Pair Enhanced	CM	0.035	0.19	74	22lbs/mft	6-219507-6
4-Pair Enhanced	CMR	0.037	0.20	70	24lbs/mft	6-57826-6

CATEGORIA 6

Tomadas 110Connect



Descrição	Cor	Part Number
CAT 6	Bege	1375055-1
CAT 6	Preta	1375055-2

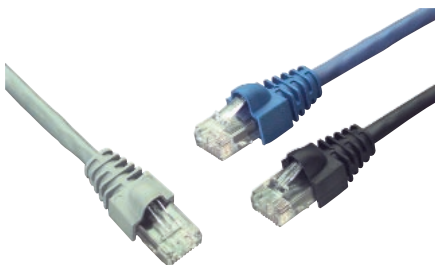
Tomadas Não Blindadas

Patch Panels



Portas	Altura (polegadas)	Part Number
12	*	1375013-1
24	1.75	1375014-1
48	3.50	1375015-1
96	7.0	1375016-1

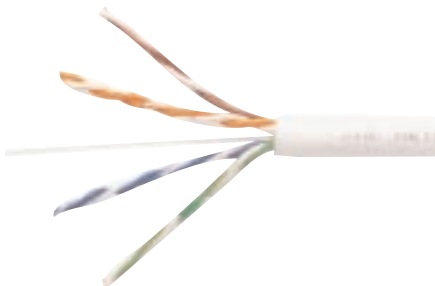
Patch Cables



Cor	Part Number
Preto	219884-X
Azul	219886-X
Vermelho	219888-X
Amarelo	219890-X

X = Comprimento em pés
-5 = 5 (aprox. 1,5mt)
-8 = 8 (aprox. 2,5mt)
1--0 = 10 (aprox. 3,0mt)

Cabo Categoria 6, 23AWG, 100 Ohm



UL/NEC Ratings	Pair Count	Embalagem	Part Number			
			Branco	Cinza	Azul	Amarelo
CMR	4	RB	219560-2	219560-1	219560-6	219560-8
		WR	219560-1	219560-3	219560-5	219560-7
		PB	-	-	6-1427200-6	-

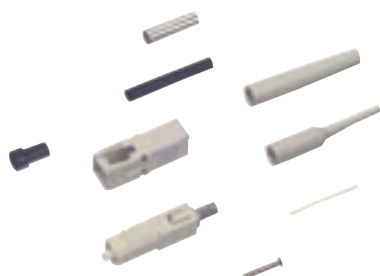
Conectores ST (62,5/125) Simplex



Tipo	Part Number
Com Epoxy	492458-1
Light Crimp	504001-1
Light Crimp Plus (pré-polido)	492642-1
Light Crimp*	504034-1

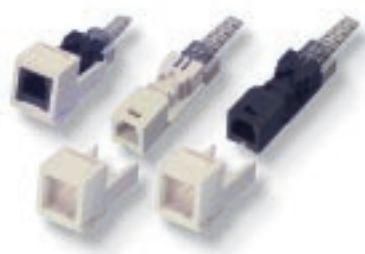
*Ferrolho Metálico

Conectores SC (62,5/125) Simplex



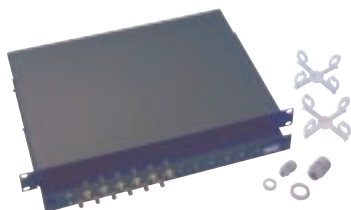
Tipo	Part Number
Com Epoxy	503948-1
Light Crimp	503692-1
Light Crimp Plus (pré-polido)	492643-1

Conectores MT - RJ (62,5/125)



Descrição	Cor	Part Number
MT-RJ	Bege	1278415-1
MT-RJ	Preto	1278415-2

Dios 1U Gaveta



Conector	Qte Fibras	Part Number
ST	12 FO	2-1206114-4
ST	24 FO	4-1206114-4
SC	12 FO	2-1206138-4
SC	24 FO	4-1206138-4

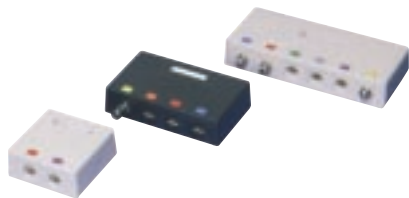
Patch Cords Ópticos (62,5/125) Duplex



Tipo	Part Number
SC para SC	504971-X
ST para ST	503994-X
SC para ST	504958-X
MT-RJ para MT-RJ	1278032-X
MT-RJ para SC	1278028-X
MT-RJ para ST	1278027-X

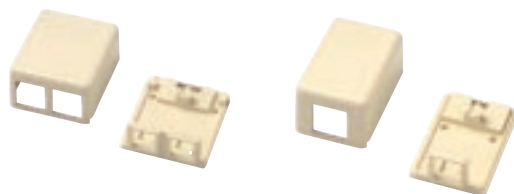
X = metros
 1 metro = -1
 2 metros = -2
 3 metros = -3
 (...)
 10 metros = 1-...-0

Temos estes mesmos acessórios para fibras 50/125 - consulte-nos

Office Boxes


Portas	Cor	Part Number
2 portas	Bege	558521-2
2 portas	Preto	558521-1

Obs.: Não aceita Jacks Cat 6 e Toolless

Modular Jack Boxes


Portas	Cor	Part Number
1 porta	Bege	1116697-1
1 porta	Preto	1116697-2
2 portas	Bege	1116698-1
2 portas	Preto	1116698-2

Espelho


Portas	Cor	Part Number
2 portas	Bege	557505-1

Plugs RJ45 (Fio Sólido)


Fio	Embalagem	Part Number
Sólido	500 peças	5-554720-2

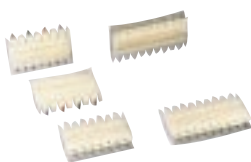
Boot 1


Cor	Part Number
Azul	569875-5
Vermelho	569875-3
Amarelo	569875-6
Branco	569875-8
Preto	569875-1
Verde	569875-4

Blocos 100 Pares IDC


Tipo	Part Number
c/ pernas	558842-1
s/ pernas	558840-1
p/ rack 19"	558635-1

Connecting Blocks



Pares	Part Number
3	558400-1
4	558401-1
5	558402-1

Emenda Corelink (Multimodo)



Qte Emendas	Part Number
12	503901-1

Adaptadores Ópticos



Tipo	Part Number
ST/ST Simplex	501381-1
ST/ST Duplex	504662-2
SC/SC Simplex	504614-1
SC/SC Duplex	504640-1
SC/ST Duplex	504663-4

Patch Cords 110



Descrição (pares)	Part Number
1	569523-X
2	569524-X
3	569525-X
4	569526-X

X = comprimento em pés: -2 = 2, -4 = 4, -8 = 8, 1-0 = 10

110/110



110/RJ45

Descrição (pares)	Padrão	Part Number
4	T568A	569527-X
4	T568B	569528-X
2	T568A, 10BASE-T	569685-X
2	T568B, 10BASE-T	569669-X
2	T568A, TOKEN RING	569686-X
2	T568B, TOKEN RING	569672-X
2	T568A, ATM/PMD	569687-X
2	T568B, ATM/PMD	569673-X

X = comprimento em pés: -2 = 2, -4 = 4, -6 = 6, -8 = 8, 1-0 = 10

Tyco Electronics Brasil S/A
 Rua Ado Benatti, 53 - Lapa
 CEP: 05037-010
 Tel: +55 (11) 3611-1311
 Fax: +55 (11) 3611-0397
 marketing_brasil@tycoelectronics.com
 www.tycoelectronics.com



